



Telescopic boom with extension and swivelling realised.



Emergency Start/Stop and control at rear tray



Emergency Start/Stop and control at basket



Front and rear outriggers  
Chassis leveling capability



Suspension Upgrade 3.5T

\* Some features shown are optional

Contact RMA Special Vehicles for more information or a quotation.

✉ [specialvehicles@rmagroup.net](mailto:specialvehicles@rmagroup.net)

🌐 [rmaspecialvehicles.com](http://rmaspecialvehicles.com)

## Vehicle Details

Manufacturer	Ford
Model	Ranger Standard Cab
Engine	2.0L Diesel Turbo
Power (kW/PS)	125/170 @3500 rpm
Torque (Nm)	405 @1750 - 2500 rpm
Drivetrain	4X4
Transmission	6-speed manual
Fuel tank capacity	80L
Wheels	16" Alloy Wheel
Tires	255/70 R16

## Base Vehicle Dimensions (mm)

Length	5370
Width (with mirror)	1910
Height	1884
Wheelbase	3270
Ground clearance	230
Water wading	800

## Base Vehicle Weight Table (kg)

Kerb weight	1818
GVW	3160
Payload	1342

## Standard Features

### Aerial platform with steel tray

- Aerial Platform (electro-Hydraulic system)
- Suspension Upgrade 3.5T
- Fire Extinguisher 1kg
- First Aid Kit Level 1 - DIN13164
- Warning Triangle

### Safety devices

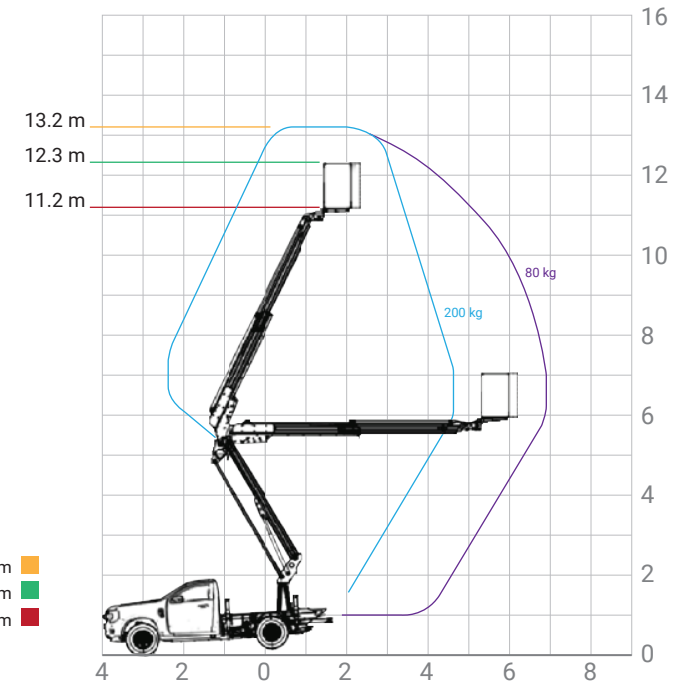
- Chassis levelling sensor
- Emergency buttons in case of emergency
- Hand pump for emergency rescue
- Manual control for emergency rescue
- Flanged holding valves on cylinders
- Cross control movement limiting device
- Outrigger/boom interlock
- Safety belts attachments in the basket
- Manual basket levelling
- Basket Load Limiting Device

### Optional Features

- Advance Fuel Filtration with water separation and clear monitoring bowl
- Vehicle painting

### Key Performance

- Working Height 13.2 meter
- Basket Height (Bottom) 11.2 meter
- Vehicle Available Payload 400kg (approx.)
- Insulate basket Payload 225kg
- Basket Insulation 1000V
- Outreach 6.55 meter
- Able to withstand winds up to 12.5 m/s



\*Working height (avg. worker reach = 2m) 13.2 m  
 \*Basket height (top) 12.3 m  
 \*Basket height (bottom) 11.2 m  
 \*measure from ground.

### Notes:

The company reserves the right to change the vehicle specifications and features described in this publication at any time. Vehicle specifications and features may vary in different markets. Images are for illustrative purposes only and may appear different from the actual vehicle.

Contact RMA Special Vehicles for more information or a quotation.

specialvehicles@rmagroup.net rmaspecialvehicles.com