



REFRIGERATED PICK UP



Contact RMA Special Vehicles for more information or a quotation.

 specialvehicles@rmagroup.net

 rmaspecialvehicles.com



REFRIGERATED PICK UP

Vehicle Details

| | |
|---------------|----------------------|
| Manufacturer | Ford |
| Model | Ranger Standard Cab |
| Drivetrain | 2.0L Diesel Turbo |
| Engine Type | 125/170 @3500 rpm |
| Power (PS/kW) | 405 @1750 - 2500 rpm |
| Torque (Nm) | 4X4 |
| Induction | 6-speed manual |
| Transmission | 80L |
| Wheels | 16" Alloy Wheel |
| Tires | 255/70 R16 |

Dimensions of Modified Vehicle (mm)

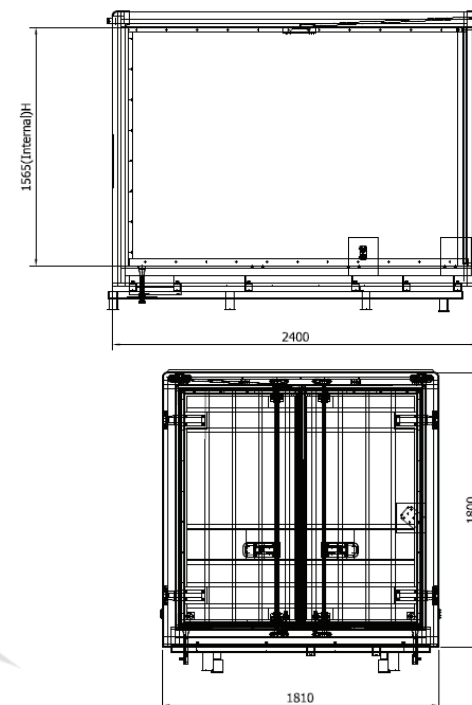
| | |
|----------------------------|------|
| Length | 5274 |
| Width | 1860 |
| Height | 2675 |
| Angle of approach (degree) | 28 |
| Wheelbase | 3220 |
| Track (front & rear) | 1560 |
| Minimum ground clearance | 230 |
| Turning circle (m) | 12 |

Fridge Box Dimension (mm)

| | |
|--------|------|
| Length | 2400 |
| Width | 1810 |
| Height | 1800 |

Weight Table (kg)

| | |
|------------------------------|------|
| Base vehicle kerb weight | 1762 |
| Modified vehicle kerb weight | 2575 |
| Gross vehicle weight | 3200 |



Standard Features

| | |
|---|---|
| Box with Refrigeration system with Integrated rear step | Fire extinguisher 1 kg (Front Passenger Seat Mount) |
| Suspension upgraded | |

Optional Features

| | |
|----------------------------------|--|
| Standby System for Refrigeration | Heavy Duty Rear Access Step |
| Rear View Camera | Shelving-3 Layer including Stainless rack with sliding mechanism |
| Reversing alarm | Vehicle painting |

Notes:

The company reserves the right to change the vehicle specifications and features described in this publication at any time. Vehicle specifications and features may vary in different markets. Images are for illustrative purposes only and may appear different from the actual vehicle.

Contact RMA Special Vehicles for more information or a quotation.

✉ specialvehicles@rmagroup.net 🌐 rmaspecialvehicles.com